

LVDT Panel Meter for DC Output LVDTs | Intuitive2-P

Key Features:

- 6-Digit LED Display (± 199999)
- Input: Voltage and Current
- Environmental Protection: IP65 (when installed)
- Sensor Excitation Supply
- Options: Alarm Relays, Analogue & Digital Outputs
- Ideal Replacement for Druck DPI 282 & 283 Indicators
- Simple, Menu Free Operation
- Compatible with all Common Voltage & Current Input Signals, i.e. 0-5Vdc, 0-10Vdc, 4-20mA
- Robust Construction
- Panel Mounted, 1/8 DIN Size
- Front Face Sealed to IP65
- 3 Year Warranty

This product is discontinued.

Please see our [LVDT Digital Panel Meter | Universal Process | Intuitive4-P](#)



The INT2-P meter's main function is to display physical variables, such as weight, load, force and torque. It provides you with a 24V regulated excitation supply, capable of providing up to 40mA of current to power a wide range of sensors and transducers. Signals can be linearised using the 10 point user configurable lineariser, a standard feature.

The INT2-P is easy to configure with no complex menu system. The readout is provided by a 6-digit LED display coupled with a 20-bit A/D converter which provides superb resolution and stability in any application. The front panel has a 7 segment window for displaying the measurement allowing decimal point and minus sign characters to be included and has 4 alarm annunciators to show the status of each alarm relay.

Peak and valley memories allow you to view the maximum and minimum recorded measurements. Also, the meter can give alarm outputs, scaled and isolated analogue output and isolated serial data retransmission when fitted with option boards.

A lockout switch on the rear of the meter saves your configuration settings in non-volatile memory, which has a 10 year guaranteed storage period. When the lockout switch is set to ON, your settings cannot be accidentally altered.

Our 3-year warranty applies to the Intuitive2-P and to any of our extensive range of transducers supplied with it, please [contact our sales team](#).

Options:

- 95-265VAC or 11-30VDC Supply
- Analogue Outputs
- RS232 or RS485
- 2x or 4x Mechanical Alarm Relays (rated 5A @ 250Vac), 2x SPCO Relays or Dual Solid State Relays.

Industries:

- Automotive
- Agriculture
- Silo and Weighing Industry
- Construction
- Alternative Energy
- Civil Engineering
- Lifting and Handling
- Waste Management

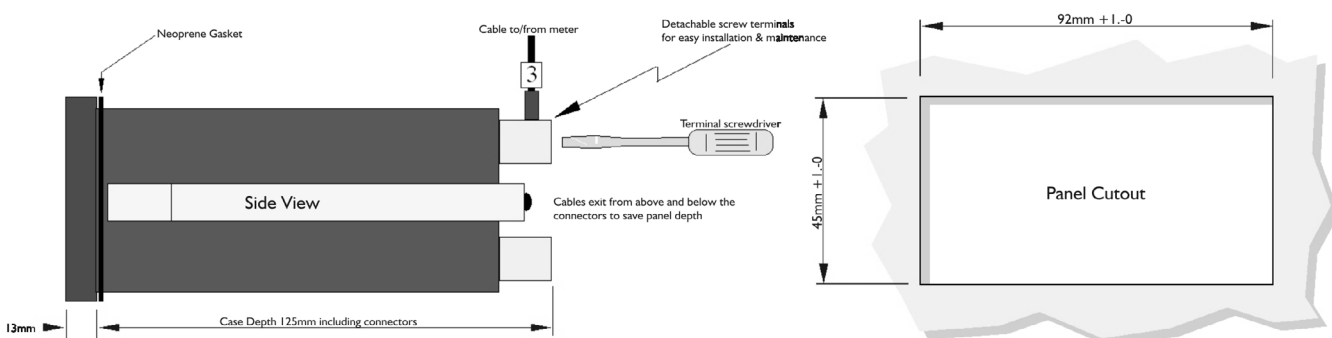
Applications:

- Weighing Platforms
- Vessel Weighing Systems
- Weighbridges
- Conveyor Weighing Systems
- Bridge Structure Monitoring
- Waste Management Systems
- Lifting and Handling
- Monitoring of Anchor Loads
- Truck Load Weight Monitoring
- Skip Weighing System
- Multi-Cell or Multi-Transducer Installations
- Monitoring of Building Foundations
- Force Measurement in Formula Racing
- Silo Weighing
- Measuring the Power Output of a Motor
- Vessel Weighing Systems

Specification:

CHARACTERISTICS	INTUITIVE2-P	UNITS
Display	6 digit, 7 segment LED, 14mm high (-199999 to +199999)	
Resolution	1:400,000 max. (bipolar)	
Display Update Rate:	10/second	
Accuracy	<±0.05	% of range of mV input
Sensor Excitation	24Vdc	Volts dc
Maximum Excitation Current	40	mA
Input Range	±5Vdc, ±10Vdc, 0-10mA, 0-20mA, 4-20mA	
Input Impedance	>10	Megaohms
Digital Filtering	0 to 5 (adjustable)	Seconds effective time constant
Display Count By	1, 2, 5, 10, 20, 50 digits (selectable)	
Analogue Output (Optional)	±10Vdc, 0-10Vdc or 4-20mA	
Operating Temperature	0 to +50	°C
Thermal Drift	Span = 25, Zero = 30	ppm/°C
Operating Voltage	95-265VAC (11-30VDC optional)	
Environmental Protection	IP65 (IP67 optional)	
Weight	300	Grams
Panel Cutout	1/8 DIN (92mm x 45mm + l/-0)	
Features	Tare facility, peak & valley detection, 10-point linearisation, 1 program memory (8 optional)	
Trip Outputs (optional)	2x or 4x relays rated 5A @ 250Vac, 2x SPCO or 2x solid state	
Serial Data Output (optional)	RS232 / RS485	

Dimensions (mm):

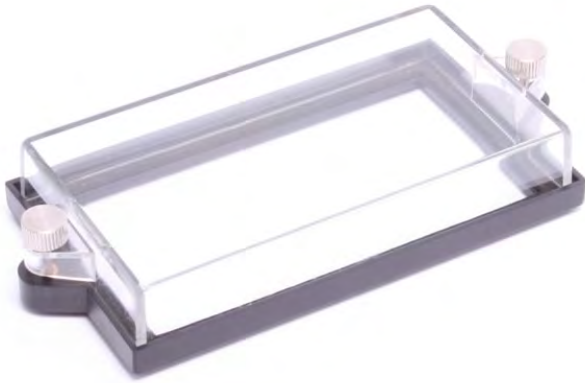


Ordering Codes:

INT2-P-ANI-AL2-0-R-AC-MEM	INT2	-	P	-	ANI	-	AL2	-	0	-	R	-	AC	-	MEM
Product Family															
INT2	INT2														
Input Version															
L = Load Cell Input			L												
P = Process Input			P												
C = Rate/Speed Input			C												
Analogue Output															
0 = None Fitted					0										
ANI = 4-20mA					ANI										
ANV = 0-10Vdc (uni-polar)					ANV										
ANB = ±10Vdc (bi-polar)					ANB										
Alarm Relays															
0 = None Fitted							0								
AL2 = 2 x Alarm Relays							AL2								
AL4 = 4 x Alarm Relays							AL4								
SPCO = 2 x SPCO Relays							SPCO								
DSS = 2 x Solid State Relays							DSS								
Serial Data Output															
0 = None Fitted									0						
232 = RS232									232						
485 = RS485									485						
Display Colour															
R = Red											R				
G = Green											G				
RDLV = Red for Daylight Viewing											RDLV				
B = Blue											B				
Y = Yellow											Y				
W = White											W				
Supply Voltage															
AC = 95-265Vac Universal Mains Supply													AC		
DC = 11-30Vdc													DC		
Additional & Special Features															
Blank = None															Blank
MEM = 8 Calibration Memory (8 different load cells) - Requires 8-way Switch															MEM
100X = Fast Version with 100 Updates/Second															100X
PL = Plain Front Cover (no buttons)															PL
SPC4 = IP67 Front Panel Cover															SPC4
Other special features will be determined by sales.															

Accessories:

SPC4: IP67 Splash-Proof Cover:

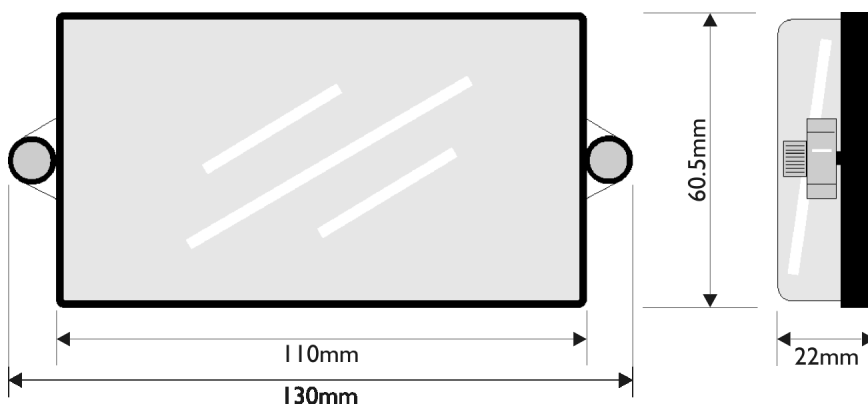


- Fits All Intuitive2 and Intuitive4 Indicators
- Low Cost
- Easy to Install
- Immersion Protected up to 1 metre
- Impact Resistant
- Fits Most 1/8 DIN Meters
- Non-Ferrous Parts for Longer Life
- Anti-Scratch Coating
- 3 Year Warranty

The SPC4 offers a low cost and robust method of sealing the front of all Intuitive2 and Intuitive4 indicators, along with most other manufacturers' 1/8 DIN size panel meters. The design uses all corrosion-resistant materials for longer life, meaning less maintenance. You can easily fit it to existing installations, or include it as a value-added accessory for new systems.

The panel cutout is the standard hole size for the panel meter, so no changes to the panel are needed. The front window is detachable, permitting adjustments to be made to the panel meter during commissioning and is held firmly in place by two knurled captive screws which resist accidental side or front impact.

The window and the holding frame are both moulded from a high impact resistant material. And, to give good reliability, the female threaded sections are made from marine brass and are moulded deep into the frame itself. Highly flexible and resilient neoprene gaskets firmly bonded to the inner and outer faces of the frame provide the reliable sealing effect, while for excellent clarity and resistance to scratching the covers are coated with a special anti-suff treatment.



Construction Materials:

Window & Frame = Polycarbonate

Screws = Nickel Plated Marine Brass

Female Threaded Bushes = Marine Brass

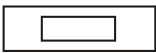
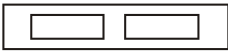
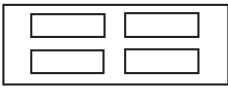
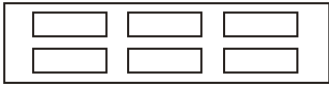
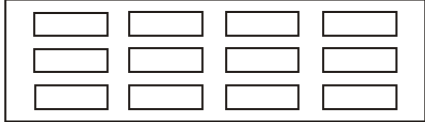
PCC: Portable Desktop Enclosure:



- Fits All Intuitive4 Indicators
- Portable
- Fused IEC Power Input
- Robust Construction
- Supply Fully-Wired and Ready to use
- Attractive Styling
- 3 Year Warranty

The PCC range of portable desktop instrument cases are designed specifically to suit our Intuitive4 and Intuitive2 range of digital indicators and are available in a range of formats for housing anything from single meter to suit simple measuring systems up to a bank of 12 meters for multiple-sensors in industrial process monitoring applications. Specially designed cases for greater numbers of meters can be offered if required - please contact sales to discuss your application in detail.

All cases are fitted with a fused IEC mains input and a single sensor connection per indicator as standard, while reset buttons, lights, alarm sounders, rotary selection switches and integral battery power/backup are just some of the options that can be added to suit your specific requirements.

	Model: PCC1	Dimensions: W200mm x H65mm x D185mm
	Model: PCC2	Dimensions: W300mm x H65mm x D185mm
	Model: PCC4	Dimensions: W300mm x H145mm x D220mm
	Model: PCC6	Dimensions: W510mm x H145mm x D220mm
	Model: PCC12	Dimensions: W685mm x H240mm x D280mm

Associated Products:



[AML/M Miniature LVDT Displacement Sensor](#)



[IL4-P Low Cost LVDT Indicator](#)



[AML/E Standard LVDT Displacement Sensor](#)



[PCC Portable Desktop Enclosure](#)



[AML/IE Industrial LVDT Displacement Sensor](#)